

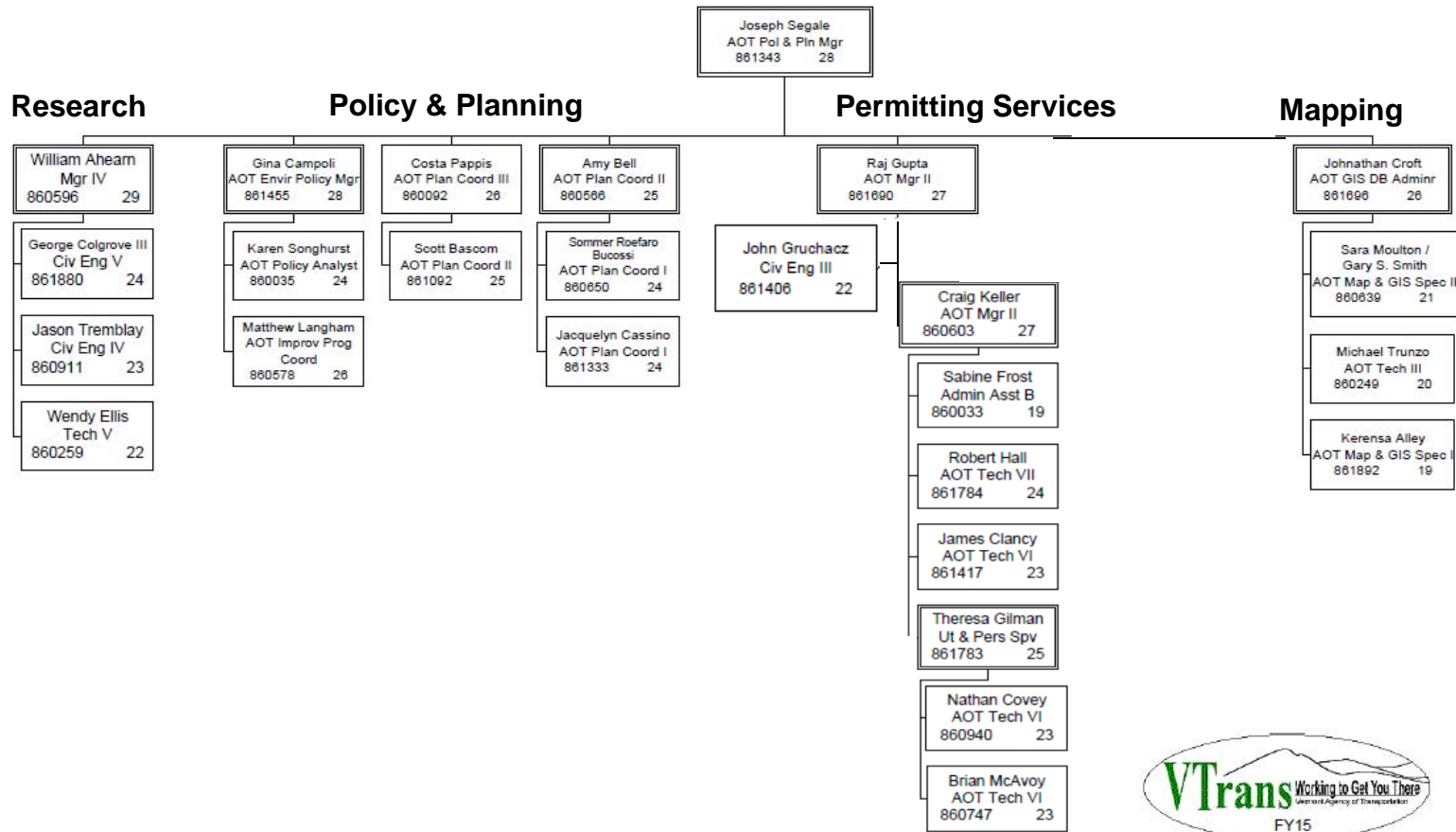


Policy, Planning & Research Bureau Overview

Presentation to House Transportation Committee
January 14, 2015

Joe Segale, P.E./PTP
VTrans Policy, Planning & Research Bureau Director

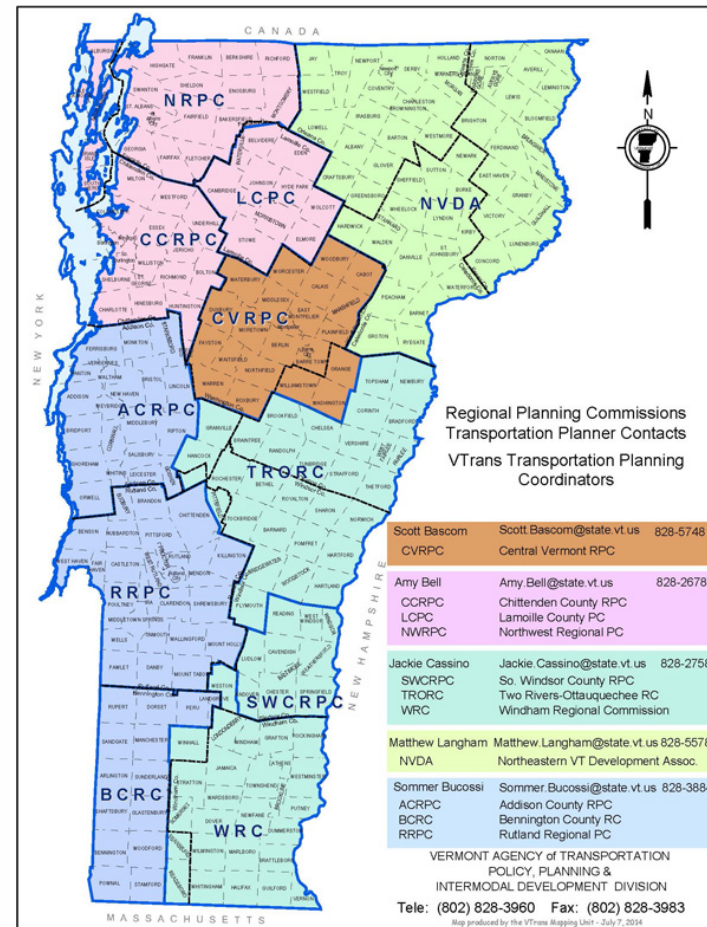






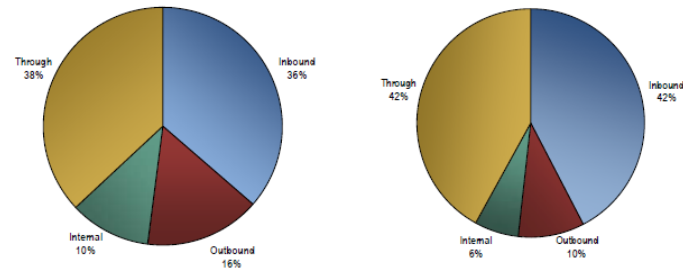
Policy & Planning Section Transportation Planning Initiative

- Funding to RPCs
- Consultative planning with RPCs and towns
- Develop regional transportation plans
- Regional input to project prioritization
- Technical assistance to towns
- Public outreach

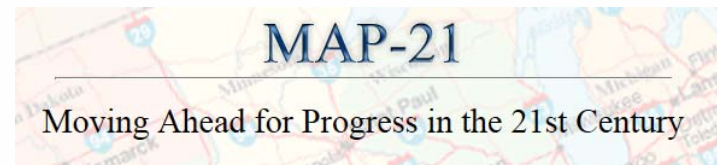


- Statewide Transportation Planning
- Corridor Planning
- Environmental Planning & Coordination
- Statewide Transportation Improvement Plan
- National & International Policy Coordination

Figure 4.1 Total Freight Flows by Type of Movement
By Weight (Left) and Value (Right)



Source: TRANSEARCH, STB Waybill, Cambridge Systematics (2007).





Permitting Services Section

- Act 250 Application Review
- Permits to Work in State ROW (19 VSA § 1111)



helping to get the there
multimedia of planning

Materials and Research Section

WHAT WE DO

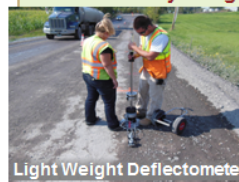
- Pavement and Subbase Research
- Bridge Monitoring
- Safety Product and Technique Evaluations
- Material Evaluations
- Field Evaluations and Testing
- Literature Searches
- Product Evaluations
- Technology Transfer and Training

RECLAIMED STABILIZED BASE WITH CEMENT RESEARCH

Clegg Impact Soil Tester
 Light Weight Deflectometer
 Falling Weight Deflectometer
 Nuclear Density Gauge



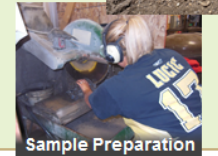
Reclaiming



Light Weight Deflectometer



The Clegg



Sample Preparation



Nuclear Density Gauge

BRIDGE MEMBRANE EVALUATIONS

Methyl-Methacrylate System
 Polyurethane System
 Chloride Testing
 Bridge Characterization
 Long-Term Monitoring



Applying an Experimental Deck Membrane



Chain Drag for Spalling

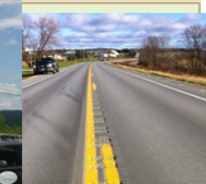


SPECIAL REQUESTS

Installing Gauges



Sign Reflectivity Studies
 Centerline Rumble Stripe Sound Testing
 Studded Tire Research
 Concrete Repair Material
 Truck Weight Limits



Centerline Rumble Stripes

PAVEMENT MARKINGS

Pavement Marking Evaluations
 Approvals for New Marking Materials



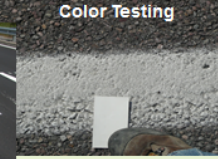
Urban Street Markings



Placing Pavement Markings



Symbol Markings



Color Testing

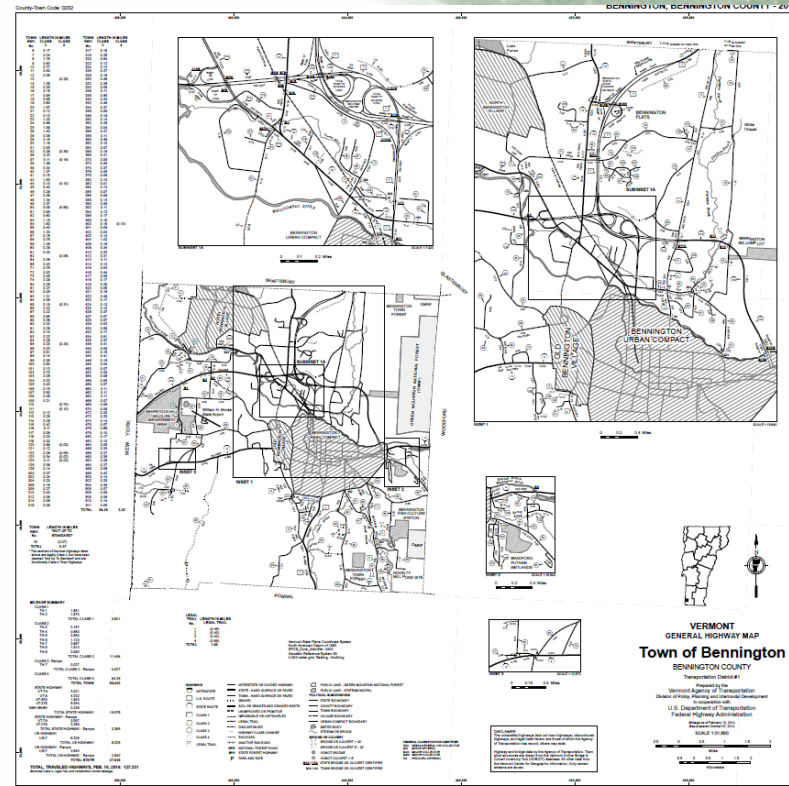


Retroreflectivity Testing



Mapping Section

- Town Highway Maps
- Annual Town Highway Mileage Certificates
- Maintains statewide road centerline GIS data used by municipalities, regions and state
- GIS and data analysis to support other agency activities





Contact Information

| Section | Manager | Functions |
|---------------------|--|--|
| Policy & Planning | Joe Segale, P.E./PTP 802-828-3968 Joe.segale@state.vt.us | <ul style="list-style-type: none"> •Transportation Planning Initiative (RPCs) •Chittenden County MPO Coordination •Statewide Transportation Planning •Environmental Planning & Coordination •National & International Policy Coordination •Statewide Transportation Improvement Plan |
| Permitting Services | Raj Gupta, P.E./PTOE 802-828-1068 Rajnish.gupta@state.vt.us | <ul style="list-style-type: none"> •Traffic data collection and analysis •Act 250 Traffic Impact Study Review •Permits to Work in State ROW (Section 1111 Permit) |
| Research | Bill Ahearn 802-828-3751 Bill.ahearn@state.vt.us | <ul style="list-style-type: none"> •Material and methods testing •Agency research projects •UVM Research Project Management •Northeast and US National Research Programs |
| Mapping | Johnathan Croft 802-828-2600 Johnathan.croft@state.vt.us | <ul style="list-style-type: none"> •Town highway maps and mileage certification •Route logs •GIS |

